

VALIANT COMMUNICATIONS LIMITED



**VCL-Ethernet over E1 (FE1)
FE1/10(100) Base-T Interface Converter**

User Manual

VALIANT COMMUNICATIONS LIMITED

71/1, Shivaji Marg, New Delhi - 110015, India

Phone: +91-11 4105 5601, +91-11 4105 5602, +91-11 4105 5603

Fax: +91-11 2543 4300, +91-11 4105 5604

E-mail: info@valiantcom.com

Web Site: <http://www.valiantcom.com>

www.valiantcom.com

Warranty

This Valiant product is warranted against defects in material and workmanship for a period of one year from the date of shipment. During the warranty period, Valiant will, at its discretion, either repair or replace products, which prove to be defective. For warranty service or repair, this product must be returned to a service facility designated by Valiant. The buyer shall prepay shipping charges to Valiant and the company shall pay shipping charges to return the product to the buyer. However, the buyer shall pay all the shipping charges, duties and taxes for products returned to Valiant from another country.

Limitation of Warranty

The foregoing warranty shall not apply to defects resulting from improper or inadequate maintenance by the buyer. The buyer-supplied firmware or interfacing, unauthorized modification or misuse, operation outside of the environmental specifications for the product or improper site preparation or maintenance.

Exclusive Remedies

The remedies provided herein are the buyer's sole and exclusive remedies. Valiant shall not be liable for any direct, indirect, special, incidental or consequential damages, whether based on contract or any legal theory.

Notice

This manual contains information that is proprietary to Valiant Communications Limited. No part of this publication may be reproduced in any form whatsoever without prior written approval by Valiant Communications Limited.

Safety Warnings



The exclamation point within a triangle is intended to warn the operator or service personnel of operation and maintenance factors relating to the product and its operating environment, which could pose a safety hazard.

Always observe standard safety precautions during installation, operation and maintenance of this product. Only qualified and authorized service personnel should carry out adjustment, maintenance or repairs to this instrument. No adjustment, maintenance or repairs should be performed by either the operator or the user.



Index

S. No.	Particulars	P. No.
I	General Description	4
II	Typical Application	4
III	Technical Feature	5
IV	Installation, Open up and Commissioning	6
	1. Qualifying the network	6
	2. Grounding	6
	3. Installation	6
V	Function Description	7
	1. Front panel	7
	2. Back panel	8
	3. DIP Switch (SW2)	9
	4. E1 Time Slots	9
	5. E1 Pinout Details	9
	6. Ethernet Pinout Details	10
VI	General Parameters	10
	1. Power Supply	10
	2. Service conditions	10
	3. Dimensions	10
VII	Support	11

VCL-Ethernet over E1 (FE1) E1/10(100) Base-T Interface Converter

Description

The VCL-Ethernet over E1-E1/10(100) Base-T Interface Converter provides the user with Ethernet over E1/E1 conversion enabling the user to transport Ethernet data over an E1 link.

The equipment be always installed and used in pairs, with one terminal being installed at either end of the network.

The VCL-Ethernet over E1-E1/10(100) Base-T Interface Converter is an Ethernet extension device utilizing TDM telecom infrastructure (the telecom network of E1s, or of PDH, SDH and E1/E3/SDH microwave etc. carrying E1s). It converts the Ethernet data into E1 frame format for transmission over the existing TDM (E1) links and then re-converts the E1 back into Ethernet data the far-end terminal, to BRIDGE two Ethernet LANs over the existing E1-based telecom network. The device can effectively utilize the redundant bandwidth of telecom operators' existing TDM network to transport Ethernet data with low investment.

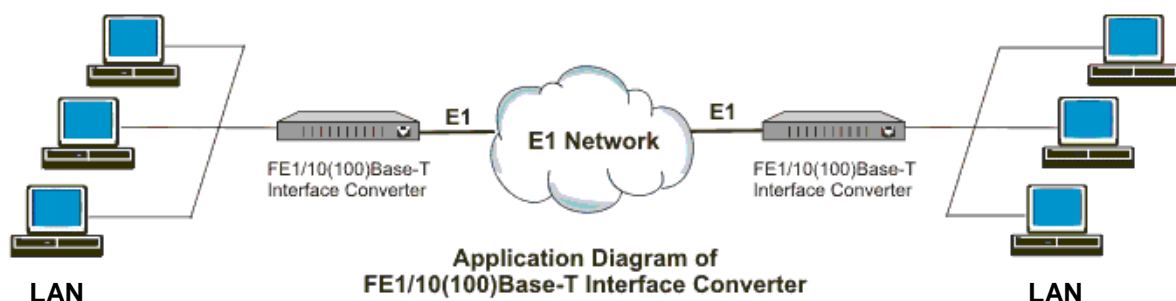
Application

The equipment may be used for the following purposes:

1. Bridging Ethernet LANs over existing TDM (E1) telecom network.
2. Extending Ethernet networks utilizing TDM (E1) landline based telecom infrastructure.
3. Using telecom network of E1s/PDH/SDH microwave etc. carrying E1s to transport Ethernet data.

In all cases the equipment be always installed and used in pairs, with one terminal being installed at either end of the network.

Typical Application:



Technical Features

- The maximum transmission rate of Ethernet data over E1 links is 2.048Mbit/s
- E1 supports three working modes of transparent transmission, framed (CCS/PCM 31) and multiple framed (CAS/PCM30)
- Allows transparent transmission of super-long frames in 1528 bytes (without CRC) and supports Ethernet switches with VLAN function
- Automatic Ethernet negotiation function. Supports 10M/100M and working modes of both full-duplex and half-duplex
- Available with MAC address list filtration, learning, and updating functions
- Available with auto-resetting function. When network port stops receiving or sending data for about 8 seconds, the auto-resetting circuit will be able to start automatically, to reduce and maintain workload for the system
- Equipment supports two working modes of internal clock and network clock
- Supports RLOOP (E1 port external loop-back) function

E1 interface specifications

Line Rate	E1 (2.048 Mbps \pm 50 bps)
Framing	Un-Framed /PCM 30 /PCM 31
Electrical	As per ITU-T G.703
Jitter	As per ITU-T G.823
Impedance	120 Ohm (RJ-45)
Impedance	75 Ohm (BNC)

Ethernet interface specifications

Interface Types	10/100BaseT
Standards Compliance	IEEE 802.3
Transmission Bit Rate	10/100BaseT limited to Max. 2.048 Mbps
Connectors	RJ45 (10/100 BaseT Electrical)

Clock

Internal and network clock.

Installation and Commissioning

1. Qualifying the network

- Please ensure that the error code rate each of the E1 circuits connecting to the equipment is lower than 10^{-7} .
- The transmission time delay difference between the various E1 circuits shall not exceed 8ms.
- The Ethernet wire type shall be, crossover when connecting with PC, and straight through when connecting to an Ethernet switch/HUB. The length of the ethernet cable shall not exceed 100m.

2. Grounding

When the device is used with the AC~220V power supply, the 3-core socket must be grounded for protection.

The other equipment (e.g. optical terminal) connected with the converter shall also be grounded to earth for protection.

3. Installation

Step 1: Power up the Ethernet Over E1 equipment. Please ensure that Ethernet Over E1 equipment is powered-up prior to connecting the ethernet and the E1 links.

Step 2: Connect E1 line on the premise that transmission device, interface converter and Ethernet converter have safely grounded.

BER test may be conducted on each E1 link using a BERT tester to ensure that the E1 errors are within the permitted limits/threshold.

Step 3: Please configure the ethernet mode of the Ethernet Over E1 equipment at both sides as well as the ethernet interfaces of the devices that are connected to the Ethernet Over E1 equipment. Connect the ethernet links.

The equipment is used to bridge two LANs. Please ensure that the LANs on both sides of the link are operating in the same IP domain.

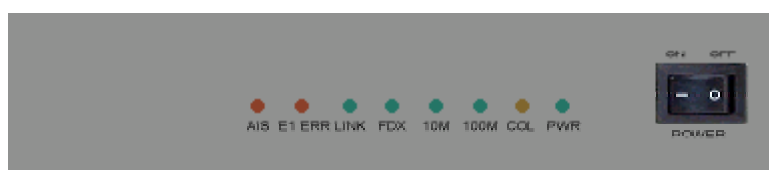
Step 4: Ping over the ethernet connection from one side to the other (near-end to the far-end) to verify that the Ethernet connection has been established between the two LANs.

After succeeding in “ping”, the user may also check the integrity of each E1 link by connecting E1 link and then transporting ethernet data over that E1 link. In the event that the Ethernet Over E1 equipment resets repeatedly or lots of frame errors are noticed, recheck the connection between E1 cable and interface converter, or E1 cable and transmission device.

Description of the Front Panel

1. Front Panel

Figure of the front panel of E1/10(100) Bast-T interface converter is as follows:



POWER LED: The GREEN LED indicator lights of power supply is lit under normal working condition when the power supply is connected.

Definition of Indicators on front panel

Switch	Description		
PWR	ON	System is powered up	
	OFF	System is not powered up	
COL	ON	Conflict indication on LAN ports	
	OFF	OK	
100 M	ON	Ethernet port rate is 100M	
	OFF	Ethernet port rate is not 100M	
10 M	ON	Ethernet port rate is 10M	
	OFF	Ethernet port rate is not 10M	
FDX	ON	Ethernet port is running in full-duplex mode	
	OFF	Ethernet port is running in half-duplex mode	
LINK	ON	LAN port connection Normal	
	OFF	No LAN connection on Ethernet port	
E1 ERR	ON	Solid	E1 Signal lost
		Flushing	E1 out of step
	OFF	OK	
AIS	ON	Alarm indication of opposite terminal during transparent transmission	
	OFF	OK	

2. Back Panel

The back panel of the 10(100) Base-T Ethernet Over E1 equipment is as follows.



DIP switch (SW1) settings on the back panel are as follows:

Switch 1	Switch 2	Switch 3	Switch 4	Function
OFF	OFF	OFF	OFF	10 M/100 M Auto-negotiating Full/Half Duplex mode
OFF	OFF	ON	OFF	10 M Full/Half Duplex mode
OFF	OFF	OFF	ON	100 M Full/Half Duplex mode
ON	ON	ON	OFF	10 M Half Duplex mode
ON	OFF	ON	OFF	10 M Full Duplex mode
ON	ON	OFF	OFF	100 M Half Duplex mode
ON	OFF	OFF	OFF	100 M Full Duplex mode

3. DIP switch (SW2) settings on the back panel are as follows:

Switch Number	ON	OFF
Switch 1	Internal Clock	Network Clock
Switch 2	E1 External Loop-back Forbidden	E1 External Loop-back Allowed
Switch 3	Auto-resetting function Forbidden	Auto-resetting function Allowed
Switch 4	Auto-resetting Delay by 16 seconds	Auto-resetting Delay by 8 seconds
Switch 5	Manual Resetting Closed	Manual Resetting Opened
Switch 6	E1 Line Impedance : 75 Ω	E1 Line Impedance : 120 Ω
Switch 7		
Switch 8		

IN 75 Ω Represents the E1 unbalanced 75 Ω input.

OUT 75 Ω Represents the E1 unbalanced 75 Ω Output.

4. E1 Time Slot Setup

Working Mode	Switch Setting
Unframed	All switches are set to OFF
Framed (CCS)	S0 set at OFF, and the occupied time slots to ON
Multi-Framed (CAS)	All switches S0~S31 set to ON but S16 to OFF

5. E1 RJ-45 to RJ-45 Crossover Pinout Details:

120 Ω RJ45 pin-out		
PIN No.	Definition of function	Signal Direction
1	NC	
2	TX+ (transmitted data +)	E1 Data Output
3	TX- (transmitted data -)	E1 Data Output
4	NC	
5	NC	
6	RX+ (received data +)	E1 Data Input
7	RX- (received data -)	E1 Data Input
8	NC	

6. Ethernet RJ-45 to RJ-45 Crossover Pinout Details:

120 Ω RJ45 pin-out		
PIN No.	Definition of function	Signal Direction
1	TX+ (transmitted data +)	Data Output
2	TX- (transmitted data -)	Data Output
3	RX+ (received data +)	Data Input
4	NC	
5	NC	
6	RX- (received data -)	Data Input
7	NC	
8	NC	

AC220V: represents the unit uses AC~220V power supply.

Power supply switch – To switch power input OFF/ON.

General:**1. Power Supply**

AC Mains Input 220V ± 20% (AC Mains Input Model)

Power Consumption ≤5W

2. Service Conditions

Ambient temperature 0⁰C ~ 50⁰C

Relative humidity ≤ 90% (at 35⁰C)

3. Dimensions

20cm x 15 x 4.3cm

4. Weight 750g

Note: Operation and maintenance of network equipment require professional knowledge and experience. We recommend the equipment to be managed only by qualified technicians. Should you require technical assistance please consult the provider, or contact our SUPPORT DESK at **support@valiantcom.com, helpdesk@valiantcom.com**

Notes : _____

Technical specifications are subject to changes without notice.
Windows is the registered Trademark of Microsoft Corporation, USA.
Revision 05 - March 10, 2007.

VALIANT COMMUNICATIONS LIMITED

71/1, Shivaji Marg, New Delhi - 110015, India

Phone: +91-11 4105 5601, +91-11 4105 5602, +91-11 4105 5603

Fax: +91-11 2543 4300, +91-11 4105 5604

E-mail: info@valiantcom.com

Web Site: <http://www.valiantcom.com>